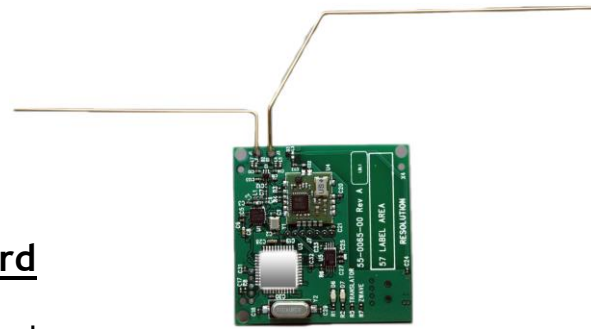




RE934ZT Translator and Zwave Expansion Card Features

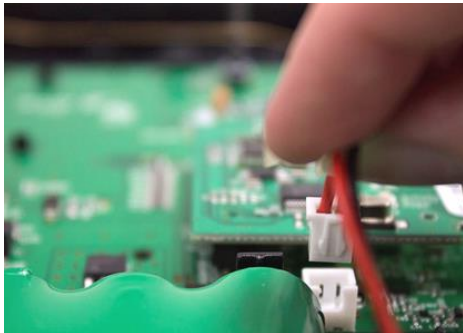
- Expansion Card that plugs into the Connect+ Panel
- Provides communications with Z-Wave devices enabling a broad range of home automation features
- Enables system to receive signals from Honeywell, 2GIG, GE, Napco & DSC sensors
- All sensor alarm, supervisory and trouble signals are reported
- Dual antennas for reliable range



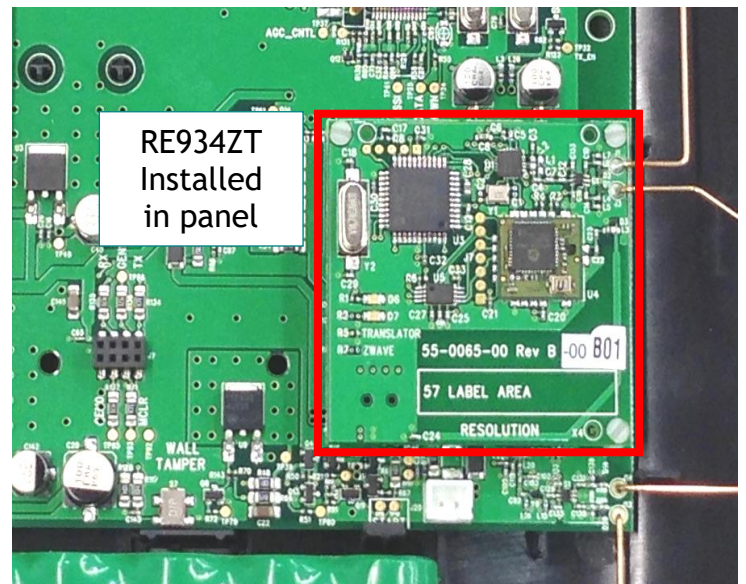
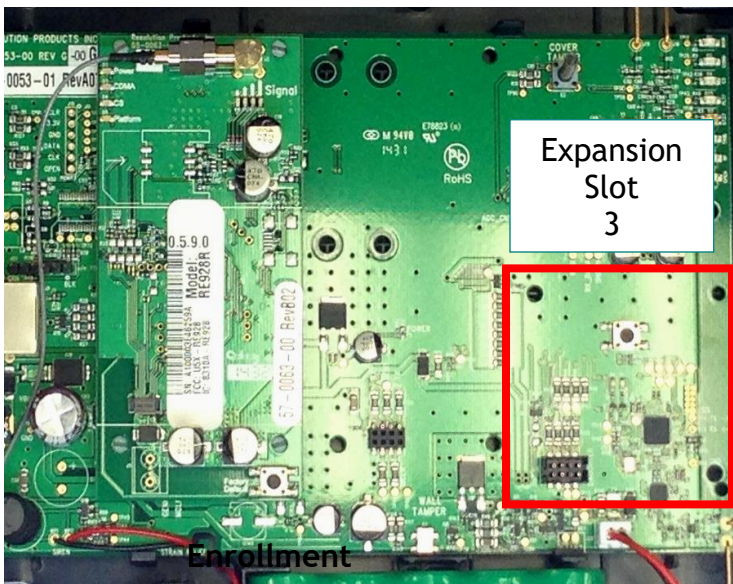
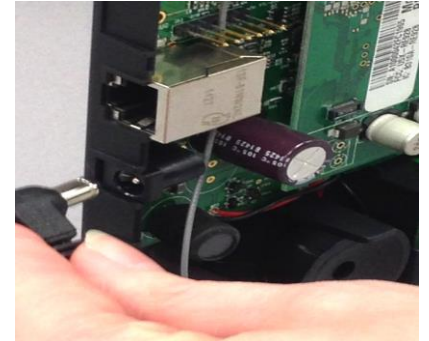
Installation

- Power down the Panel:
 - Open cover
 - Unplug battery cord
 - Unplug the power cord
- Insert the RE934ZT into expansion slot 3 of the Control Panel, gently inserting the connector and snapping the stand-offs into place
- Connect battery cord, plug the power, and close the cover to the panel

Battery
Cord
Plug



Power
Cord
Plug



With the translator, sensors are enrolled into the panel via RF transmission. Once enrolled, the zones are configured in the panel the same way as Connect+ zones. It is important to follow enrollment instructions carefully, and execute the steps in order, so that devices are enrolled properly. Before enrollment, the panel will first need to be set to the proper translator protocol and save the panel settings. This is set via the dealer portal or installer app.

Enrolling GE Devices

- Place panel in sensor enrollment mode.
- Activate particular GE sensor as follows:
 - **DWS:** Open the cover of the sensor
 - **PIR & Glass break:** Open the cover of the sensor
 - **Key fobs:** Press the Lock and Unlock buttons simultaneously for 3 seconds
 - **Panic:** Press the panic button

Enrolling DSC Devices

- Place panel in sensor enrollment mode.
- Activate particular DSC sensor as follows:
 - **DWS:** Open and close the cover of the sensor
 - **PIR & Glass break:** Open and close the cover of the sensor
 - **Key fobs:** Press the panic button (lower right)
 - **Panic:** Press the panic button

Enrolling Honeywell Devices

- Remove batteries on all PIR motion detectors.
- Place panel in sensor enrollment mode.
- NOTE: Honeywell sensor types must be enrolled in the following order.
Activate particular Honeywell sensor as follows:
 - **PIR with Tamper:** Press and hold tamper button and insert battery
 - **PIR without Tamper:** Insert battery
 - **DWS:** Cycle the door or window contact three times, either open-close-open or close-open-close. Allow no more than 3 seconds between actions
 - **Key fobs:** Press the ON (Arm) button; wait two seconds, press the OFF (Disarm) button
 - **Panic:** Open panic and remove the battery. Press and hold the panic button and insert battery with button pressed. Release button within 3 seconds

Enrolling Napco Devices

Place panel in sensor enrollment mode.

Activate particular Napco sensor as follows:

- **DWS:** Open and close the cover of the sensor
- **PIR & Glass break:** Open and close the cover of the sensor
- **Key fobs:** Press the Aux2 (Panic) button
- **Panic:** Napco Panic is not supported by the translator

Enrolling 2GIG Devices

- Place panel in sensor enrollment mode.
- Activate particular 2GIG sensor as follows:
 - **DWS:** Cycle the door or window contact three times, either open-close-open or close-open-close. Allow 2 or 3 seconds between actions.
 - **PIR:** Press and hold tamper button and insert battery
 - **Glassbreaks:** Open and close the cover of the sensor
 - **Key fobs:** Press and hold Arm Away and Disarm buttons simultaneously
 - **Panic:** Press the panic button

Testing

- Verify in the web portal or installer app that the device shown, device type, and settings are correct for each zone.
- Verify that the correct number of zones were enrolled into the panel.
- Test each zone to verify proper operation.

Z-Wave

Z-Wave devices can be controlled via the Interactive function.

Picture

Green LED:
 ON - When panel is AC powered
 OFF - When panel does not have AC power
 Flickers - With each sensor packet received

Red LED:
 Normally Off, flashes with each Zwave message received from panel



Specifications

Temperature Range: 0F to 120F
Board dimensions: 1.8 x 1.7 x .1 inches

Specifications subject to change without notice.

Notices

Warranty

Alula will replace products that are defective in their first five (5) years.

FCC Notice

This device complies with Part 15 of the FCC rules. Operation is subject to the following two conditions:

This device may not cause harmful interference.

This device must accept any interference that may be received, including interference that may cause undesired operation.

Changes or modifications not expressly approved by Alula could void the user's authority to operate this equipment.

FCC ID: U5X-RE934ZT

IC Notice

This device complies with Industry Canada license-exempt RSS standard(s). Operation is subject to the following two conditions:

(1) This device may not cause interference, and

(2) This device must accept any interference, including interference that may cause undesired operation of the device.

Le présent appareil est conforme aux CNR d'Industrie Canada applicables aux appareils radio exempts de licence. L'exploitation est autorisée aux deux conditions suivantes :

(1) l'appareil ne doit pas produire de brouillage, et

(2) l'utilisateur de l'appareil doit accepter tout brouillage radioélectrique subi, même si le brouillage est susceptible d'en compromettre le fonctionnement.

IC: 8310A-RE934ZT

IC Model: RE934ZT